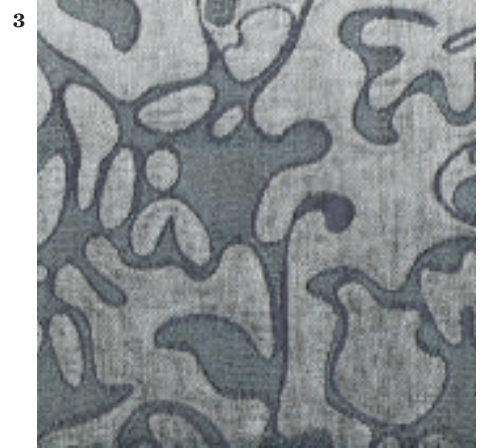


STORMY WEATHER

Now's the time to snuggle up surrounded by moody grays.

BY MALLORY McCREARY



1. The exaggerated bow and cloudy vellum finish of the **BALTHAZAR'S CHEST** (\$8,267) from Julian Chichester give it presence in a room; Janelle Interiors, Ojai, janelleinteriors.com.
2. Oly Studio's **ANNI CHANDELIER** (\$2,850) is a modern take on a lantern for a stormy night, with cast-resin sides reminiscent of tempestuous cyclonic swirls; Maison K, Santa Barbara, maisonkinc.com.
3. Volcanic grays eddy and undulate in **AST'S SEASMOKE FABRIC** (\$146); Designers' Axess, Westlake Village, designersaxess.com.
4. Palecek's **MIDDLEFORK CENTER TABLE** (from \$3,324) from the Jeffrey Alan Marks Collection has a multilayered distressed finish topped by a brighter leatherette top; Designs of the Interior, Westlake Village, interiordesignwestlake.com.
5. An original photograph from artist Edward Asher is printed onto brushed aluminum in the **CLOUD STUDY PRINT** (\$700); Crate and Barrel at The Village at Topanga, Woodland Hills, crateandbarrel.com.
6. The **CUSTOM-MADE CHELSEA SOFA** (\$1,975) is a nod to the more traditional Chesterfield sofa and can be made in a variety of configurations; The Sofa Guy, Thousand Oaks, thesofaguy.com. ♦